

Planar Transformer & Inductor

E/E 18

Power Capacity 50 to 100W

Core size (LxHxW) : 22x9x22 Unit : mm

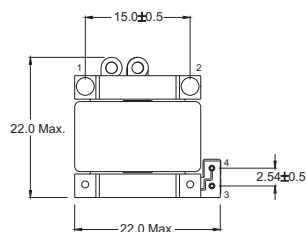
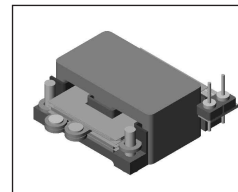
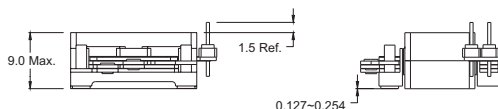
Frequency Range : 100K~500KHz

Features

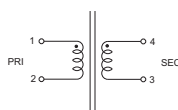
- This low profile planar inductor is developed for a high power density DC-DC converter.

Mechanical Dimension:

Unit: mm



Schematic :



Electrical Characteristics:

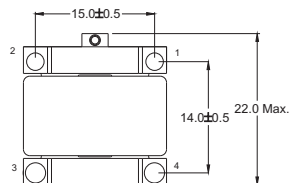
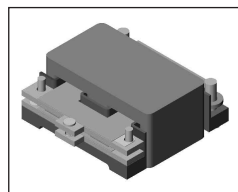
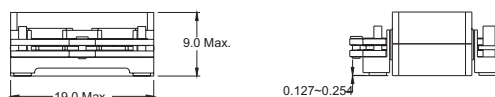
INDUCTOR									
PART NO.	INDUCTANCE		OPERATING FREQUENCY	TURN RATIO (1-2) TO (4-3)	DIELECTRIC STRENGTH		AMBIENT TEMPERATURE	WEIGHT	CURRENT UP TO
	L(1-2)	L(4-3)			PRI TO SEC	WDGS TO CORE			
PLI1810-001	1.44uH±25%	12.96uH±25%	400KHz	3 : 9	1500Vdc	500Vdc	- 10°C to +55°C	7.4gr	35 A

Features

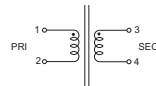
- This planar inductor is suitable for forward converter's output inductor and it has a winding for auxiliary feed to input side.

Mechanical Dimension:

Unit: mm



Schematic :



Electrical Characteristics:

TRANSFORMER									
PART NO.	INDUCTANCE		OPERATING FREQUENCY	TURN RATIO (1-2) TO (4-3)	DUTY CYCLE	DIELECTRIC STRENGTH		AMBIENT TEMPERATURE	WEIGHT
	L(1-2)	L(4-3)				PRI TO SEC	WDGS TO CORE		
PLI1810-002	172.8uH±25%	10.8 uH±25%	400KHz	8 : 2	0.5 Max.	1500Vdc	500Vdc	-10°C to +55°C	7.8gr



DELTA ELECTRONICS, INC.

(TAOYUAN PLANT CPBG) 252, SAN YING ROAD, KUEISAN INDUSTRIAL ZONE, TAOYUAN SHIEN, 333, TAIWAN, R.O.C.

TEL: 886-3-3591968; FAX: 886-3-3591991

<http://www.deltawww.com>